

SHARP

MX-7500N / MX-6500N
Pro Series Colour Production Printing Systems



HIGH PERFORMANCE SRA3
COLOUR PRINTING

Every deadline is a promise **/This is Why** our printing systems do more, faster.

Your reputation rests on every job /This is Why the Sharp Pro Series lets you get it right first time.

The MX-7500N and the MX-6500N Pro Series colour production printing systems offer exceptional productivity, professional features and world-class image quality at speeds of up to 75 ppm.

Designed for busy in-plant and on-demand workflow environments, these new models combine a versatile, modular design with a wide range of supported media and powerful output capabilities that can help your business produce more jobs in-house and improve profitability.

Class-leading innovation

Best-in-class paper feeding technology for versatile media handling, high input capacity and a unique ability to print right to the edge of land-scape format documents, helps operators to quickly create high quality, full bleed booklets in-line.

Plus, if you add the latest EFI Fiery controller you can operate it directly from the integrated 15.4" colour LCD touch screen. That means that you won't need to sacrifice space by adding a dedicated monitor or special furniture.

Combined with extensive in-line finishing options and low maintenance operation, the Pro Series deliver greater versatility, advanced productivity, professional workflows and precise colour control - capabilities that are usually found only in much more expensive machines.

High quality colour processing

1200 x 1200 dpi with 8-bit processing ensures exceptionally fine screening, smooth shades and colour gradients, as well as crystal-clear text and graphics.

Colour Consistency System

Sharp's Colour Consistency System combines Micro-fine Toner Technology with advanced Developer Refresh Technology and next generation Image Process Control. This synergy of processes helps ensure colour output is at peak performance page-after-page and job-after-job.



Every day brings new challenges /This is Why we give you more options.

An impressive range of paper input and document finishing options lets you take on a huge variety of jobs. What's more, the modular design means that the configuration you specify today can be easily upgraded if your needs change in the future.

The standard paper supply, for example, starts at 3,100 sheets but this can easily be expanded right the way up to 13,500 sheets. Not only does that give you longer uninterrupted printing for maximum productivity, but you can load the trays with a wide variety of media.

There are up to three stacker options, allowing up to 14,000 sheets (A4) or 12,000 sheets (SRA3) for hours of uninterrupted printing. An efficient Curl Correction Unit delivers flat output for trouble-free processing through the finishing devices.

From B5 through to 13" x 19.2" (330.2mm x 487.7mm), from 60 to 300 gsm, and on coated, uncoated and textured stock: it all gets fed smoothly and reliably from up to four triple air-fed large capacity trays. What's more, you can replenish the paper supply without interrupting the print run.

Extensive finishing options

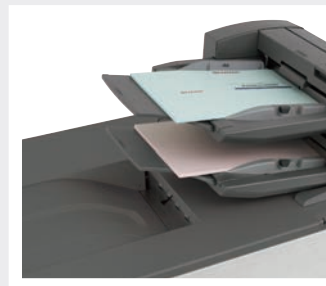
The advanced media handling capabilities of the Pro Series are supported by one of the industry's widest range of finishing options to let you take on the greatest variety of jobs.

A full range of automated finishing options is complemented by the ability to add the industry-leading GBC SmartPunch inline punching system and the Plockmatic 30-sheet professional booklet making unit with trimming and square fold options.

Other in-line options include sorting, collating, 100-sheet stapling and multi position hole-punching, 20-sheet booklet-making with optional trimming, a post-process inserter, plus half, Z, C, engineering and double parallel folding.

It all adds up to total productivity and professional output for the best possible return on investment.

EXTENSIVE FINISHING CAPABILITIES



Colour control shouldn't be difficult /This is Why we made it easy.

Regardless of whether you're running a commercial print-for-pay business or an in-house corporate reprographics department there's a configuration to suit your needs.

If you're looking for a powerful production-class printing system that can be operated without specialist skills, choose an MX-7500N or MX-6500N with our integral print controller.

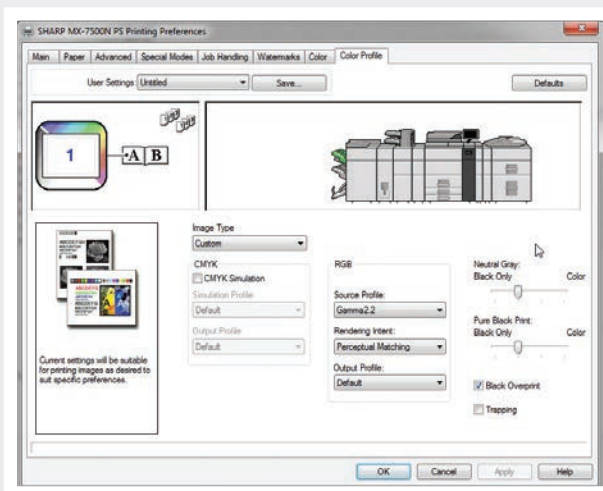
Easily mastered controls

As well as entry-level colour management and simplified print job programming, you'll benefit from easy-to-master colour management tools and controls for rendering intents, output profiles, screening and CMYK correction.

Although it's easy to use, it's extremely capable. Advanced system architecture is supported by 5GB memory and a 1TB HDD. A fast RIP lets you print large and complex documents quickly and with excellent colour accuracy. And you get genuine Adobe PS3 to support advanced graphic applications

Advanced colour control features include auto trapping, standard and custom ICC profiles, RGB to CMYK colour conversion controls. And it's easy for anyone to adjust RGB colour balance as well as image brightness, contrast and saturation.

Or perhaps you need the precise control and advanced workflow capabilities of the optional EFI Fiery controller and Command WorkStation software. In either case, look no further.



ADVANCED COLOUR PROFILING



Sometimes, you need the ultimate performance
/This is Why we offer the latest EFI Fiery controller.



Fiery servers are without a doubt the digital printing industry's de facto standard. Powerful processing technology, deeply integrated with Adobe technology and Fiery SmartRIP, makes light work of complex jobs and heavy workloads.

Because Fiery servers can spool, RIP and print simultaneously, the printing system can run at its full rated speed. Productivity is enhanced and jobs are turned around faster than ever.

Precise, consistent colour

Fiery colour management tools for colour matching, profiling, preflight and troubleshooting guarantee the best colour consistency and accuracy. All Fiery servers are PANTONE® calibrated to guarantee the best match for all PANTONE colour libraries.

Winner of multiple awards, Fiery Command WorkStation makes it easy for local and remote Mac and PC clients to manage Fiery servers, do colour management, submit jobs, prepare and preview jobs before printing, and more. The 15.4" touch screen gives you multi-touch finer-swipe control of the optional Fiery server.

Effortless variable data printing

Fiery servers provide fast job processing for variable data printing (VDP). Compatible with all VDP protocols, languages and applications, they let you work with the authoring tool of your choice to create static and variable elements.

Expert tools

Fiery servers come with a wide range of workflow and colour management software tools. Together, Fiery Spot-On™, Fiery Graphic Arts Package, Premium Edition and Fiery Colour Profiler Suite provide a sophisticated, scalable solution that comes with all the standard functionality needed for production printing, graphics and corporate environments.

We understand professional print /This is Why we designed the Pro Series to take the pressure off.

We designed the MX-7500N and MX-6500N to handle the widest possible range of jobs in the greatest variety of print environments.

Whichever one you choose, you can be sure of investing in a production-class colour printing system that has the performance features, versatility and ease of use you need to satisfy your most demanding requirements.



LARGE PAPER CAPACITY FOR UNINTERRUPTED PRINTING

TRIPLE AIR FEED SYSTEM FOR MAXIMUM RELIABILITY AND MINIMAL DOWNTIME

Maximum uptime

No one likes interruptions - they're expensive and disruptive. So you'll be reassured to know you can top up the toner and paper supplies of the Pro Series without pausing the print run.

The paper supply which can be expanded right the way up to 13,500 A4 sheets (or 10,500 SRA3 sheets) from up to 9 pick points, supports media up to 300 gsm even when duplexing, due to Sharp's advanced air-feed technology.

Normally only found on larger production devices and printing presses, the triple-air feed system directs air flow with precision accuracy to ensure proper paper handling. Reliable input combined with large capacity output gives you hours of continuous printing.

An on board paper catalogue stores up to 1000 media profiles to help improve productivity by streamlining job set-up as well as maintaining optimum output quality.

Double-sided scanning (as fast as 150 impressions per minute) is easy and efficient, and, thanks to a 150-sheet Duplex Single Pass Feeder, you can store documents, jobs and applications on the 1TB internal hard drive.



We believe in environmental responsibility /This is Why we're working to consume fewer natural resources.

Supporting your environmental objectives

Clearly, all production-class printing systems are designed for high volume work. But that doesn't mean they have to consume unreasonable amounts of natural resources. Like all Sharp printing systems, the MX-7500N and MX-6500N have been designed and engineered to be as environmentally friendly as possible.

LED lights in the scanner and fast warm up times save time and money. Plus, a special Eco Scan Mode switches the fuser off whenever appropriate.

The Pro Series colour document systems use Sharp's advanced micro-fine toner technology, which offers a lower consumption rate and produces less waste than conventional toners, resulting in longer replacement intervals.

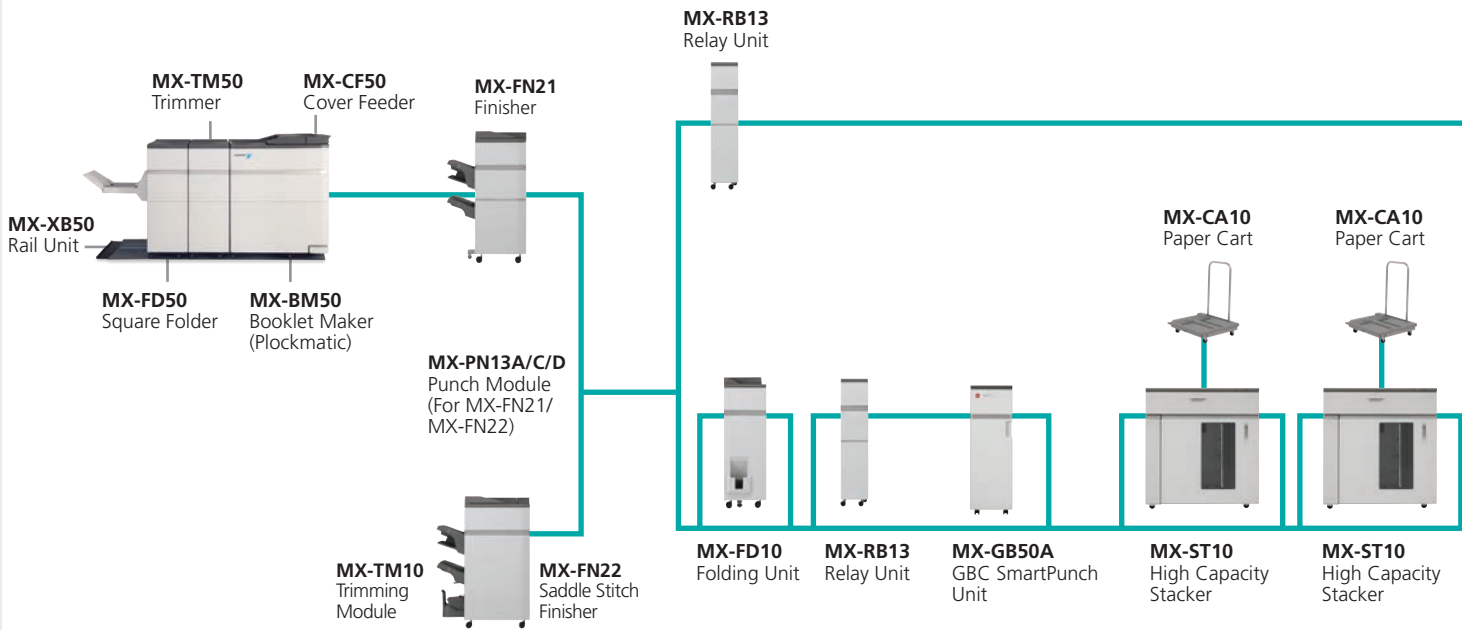
Sharp supplies are packaged using fully recyclable materials. Long-life consumable parts help minimise service intervals and downtime, resulting in lower operation costs. With two different energy saving modes, power can be reduced or shut off at set intervals. All Sharp document systems are ENERGY STAR® certified.

Global initiatives

Sharp is committed to environmental sustainability and corporate responsibility including planning, design, manufacturing, distribution and product end-of-life management.



Options & Configuration Examples



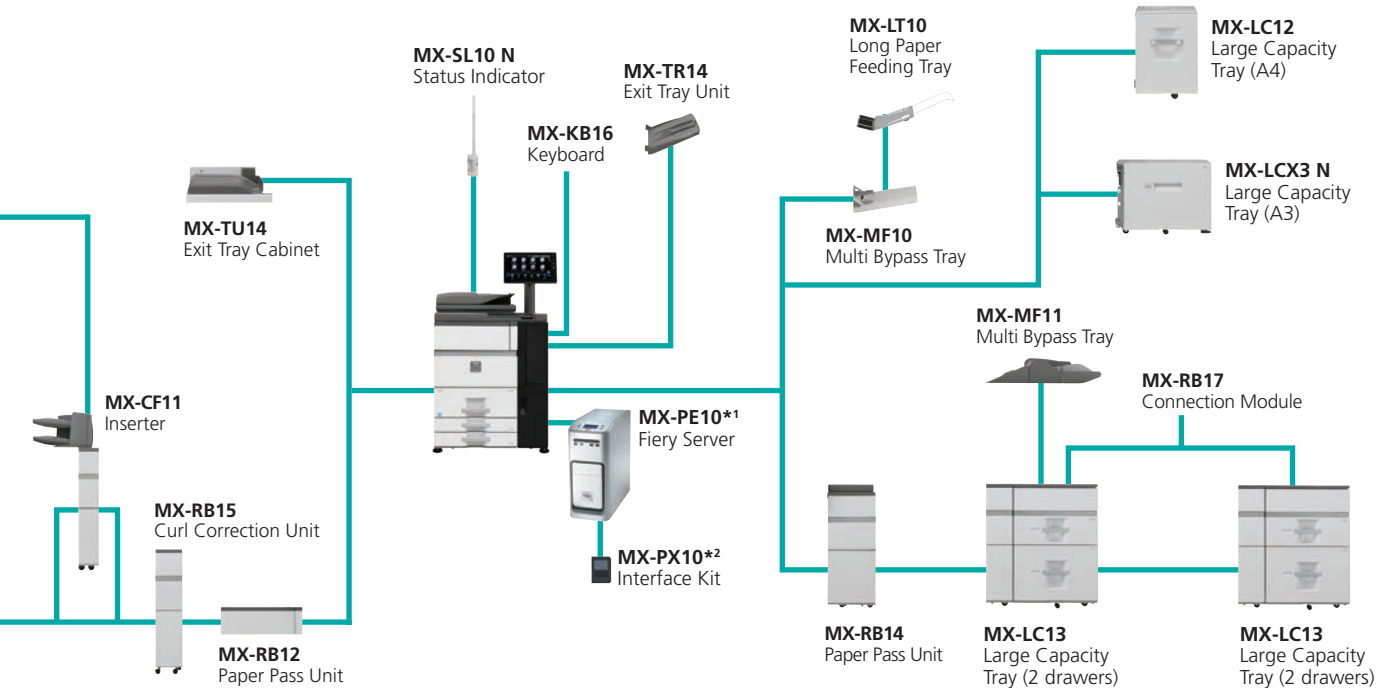
Basic All-rounder

- 150 images per minute scanning
- 8,500 sheets input capacity
- 6,000 sheets input for booklets
- Stack, sort, staple and saddle-stitch



Hours of Un-interrupted Printing

- 10,500-sheet (A3/SRA3) or 13,500-sheet (A4) paper input
- Up to 10,000-sheet output
- Operator status lamp for 360 degree visibility of machine status



*1 MX-PE10 requires MX-PX10. ** MX-PX10 requires MX-KB16.



Flexible and Versatile

- Post process inserter which can also be used for semi-automatic off-line finishing
- Multi-fold unit for half, Z, C, engineering and double parallel folds
- GBC SmartPunch for fast on-the-fly hole punching for off-line mechanical binding
- 7 input points for different media, types, sizes and weights



High Quality Professional Brochures and Booklets

- Up to 120 page square-fold spine booklets
- Maintains engine speed
- Pre-printed covers
- Flat output for shelf stacking or easy packing
- Trimmed
- Full bleed booklets

Base Unit

MX-KB16 Keyboard

1. MX-MF10 Multi Bypass Tray (for main machine)
A5R - A3W (also supports 13" x 19.2"), 100 sheets (80g/m²)

2. MX-LT10 Long Paper Feeding Tray
Recommended for banner printing.

3. MX-LC12 Large Capacity Tray (A4)
A4 - B5, 3,500 sheets (80g/m²)

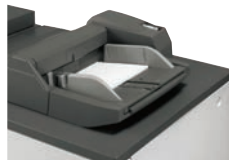
4. MX-LCX3 N Large Capacity Tray (A3)
A3 - A4R (also supports 13" x 19.2"), 3,000 sheets (80g/m²)

5. MX-RB14 Paper Pass Unit (between main machine and MX-LC13)

6. MX-LC13 Large Capacity Tray (2 drawers)
SRA3 - A4R (also supports 13" x 19.2"), 2,500 sheets each (80g/m²)

MX-RB17 Connection Module
Required if 2 x MX-LC13 are installed.

7. MX-MF11 Multi Bypass Tray
(for MX-LC13)
SRA3 - A5R (also supports 13" x 19.2"),
500 sheets (80g/m²)



Multi Bypass Tray

8. MX-SL10 N Status Indicator

9. MX-PE10 Fiery Server

10. MX-PX10 Interface Kit



Fiery Server

Finishing

11. MX-TR14 Exit Tray Unit
Cannot be installed with MX-RB14, MX-LC13 and MX-MF11.

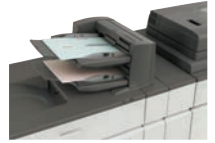
12. MX-TU14 Exit Tray Cabinet

13. MX-RB12 Paper Pass Unit (for main machine)

14. MX-RB15 Curl Correction Unit

Corrects paper curling by putting pressure on the convex/concave curl.

15. MX-CF11 Inserter (200-sheet x 2 bin)
SRA3 - A5R, 200 sheets each (80g/m²)
Requires MX-RB15 and either MX-RB13 or
MX-FD10 if connecting to MX-FN21 or
MX-FN22.



Inserter

16. MX-ST10 High Capacity Stacker

SRA3 - A5R
Paper stacking tray: 5,000 sheets (80g/m²)
Top tray: 250 sheets (80g/m²)



Stacker

17. MX-CA10 Paper Cart

Included with MX-ST10.

For transporting finished documents to another location.

18. MX-GB50A GBC SmartPunch Unit

Paper Size: A4

Paper Weight: 75-216 g/m²

MX-GBX12 12 Hole VeloBind

MX-GBX20 20 Hole Plastic Comb

MX-GBX21 21 Hole Plastic Comb

MX-GBX23 23 Hole Wire

MX-GBX34 34 Hole Wire

MX-GBX47 47 Hole Color Coil

MX-GBX34PR 34 Hole ProClick

MX-GBX2H65 2 Hole 6.5mm Pin

MX-GBX4H65 4 Hole 6.5mm Pin

MX-GBX2H80 2 Hole 8mm Pin

MX-GBX4H80 4 Hole 8mm Pin

MX-GB54 21 Hole Plastic Comb

MX-GB55 34 Hole Wire

MX-GB56 4 Hole 8mm Pin



CombBind®



WireBind



ProClick®



Color Coil®



2 hole



VeloBind®

19. MX-RB13 Relay Unit (between 100-sheet finisher and inserter).

20. MX-FD10 Folding Unit

Folding options include Z, C, accordion,
double and half folds.



Folding Unit

21. MX-FN21 Finisher (4k - 100-sheet staple)

A3 - B5 (offset/staple), SRA3 - A5R (non offset)

Upper tray: 1,500 sheets*

Middle tray: 250 sheets*

Lower tray: 2,500 sheets*

100-sheet* staple capacity
(front, rear or 2 point stitching)

Finisher

22. MX-FN22 Saddle Stitch Finisher (4k - 100-sheet staple)

A3 - B5 (offset/staple), SRA3 - A5R (non offset)

Upper tray: 1,500 sheets*

Middle tray: 250 sheets*

Lower tray: 2,500 sheets*

100-sheet* staple capacity
(front, rear or 2 point stitching)Saddle stitch tray: 5 sets (16-20 sheets),
10 sets (11-15 sheets), 15 sets (6-10 sheets),
25 sets (1-5 sheets). Max 20 sheets per set.

Saddle Stitch Finisher

MX-PN13A/C/D Punch Module (for MX-FN21 or MX-FN22)

A: 2 hole punch, C: 2/4 hole punch, D: 4 hole wide punch

MX-TM10 Trimming Module (for MX-FN22)Up to 20 mm trim width, 1,500 sheets (80 g/m²)**23. MX-BM50 Booklet Maker** (Plockmatic)

A4, A3, SRA3

Paper size: 206 x 275mm (Min) to 320 x 457.2mm (Max)

Paper Weight: 64-300 g/m²

Capacity: 1-30 sheets* (stapled and folded);

1-6 sheets* (non-stapled and folded)

24. MX-TM50 Trimmer (for Plockmatic)

Trim Length: 1-16mm, Default: 4.5mm

25. MX-FD50 Square Folder (for Plockmatic)

A4, A3, SRA3

Paper size: 206 x 275 mm (Min) to 320 x 457.2 mm (Max)

Paper Weight: 64-300 g/m²

Capacity: 1-30 sheets* (stapled and folded)

26. MX-CF50 Cover Feeder (for Plockmatic)Paper Weight: 70-250 g/m²Capacity: 20mm (approx. 200 sheets of 80g/m² paper)**27. MX-XB50 Rail Unit**

Booklet Maker

Connectivity**Printing****MX-PF10 Barcode Font Kit**

Enables barcode printing.

MX-PUX1 XPS Expansion Kit

Enables XPS printing.

MX-AM10 Web Browsing Expansion Kit

Enables Internet browsing and printing from the control panel.

Scanning**AR-SU1 Stamp Unit**

Marks already scanned documents for checking.

MX-EB11 Enhanced Compression Kit

Enables creation of high compression PDFs.

Sharp OSA®**MX-AMX1 Application Integration Module****Security****MX-FR43U Data Security Kit** (non CC version)**MX-EB15 Mirroring Kit**

Second hard drive enables data backup of files stored on HDD.

* A4 or smaller, 80 g/m².

Specifications

General

A4 Engine speed (ppm) (Plain / Coated) (Max) 52 – 105 g/m ² 106 – 220 g/m ² 221 – 300 g/m ²	MX-7500N 75 / 75 38 / 38 30 / 30	MX-6500N 65 / 65 38 / 38 30 / 30
A3 Engine speed (ppm) (Plain / Coated) (Max) 52 – 105 g/m ² 106 – 220 g/m ² 221 – 300 g/m ²	MX-7500N 42 / 42 23 / 23 18 / 18	MX-6500N 38 / 38 23 / 23 18 / 18
SRA3 Engine speed (ppm) (Plain / Coated) (Max) 52 – 105 g/m ² 106 – 220 g/m ² 221 – 300 g/m ²	MX-7500N 40 / 40 22 / 22 17 / 17	MX-6500N 36 / 36 22 / 22 17 / 17
Paper weight (g/m ²) (Min – Max) Drawer 1 & 2 Drawer 3 & 4 MX-MF10 MX-MF11 MX-LC12 MX-LCX3 N MX-LC13	60 – 105 60 – 220 55 – 300 55 – 220 60 – 220 60 – 220 55 – 300	
Paper size (Min – Max) Drawer 1 & 2 Drawer 3 Drawer 4 MX-MF10/MX-MF11 MX-LC12 MX-LCX3 N MX-LC13	A4 B5R – A3W A5R – A3W A5R – SRA3 (also supports 13" x 19.2") B5 – A4 B5 – A3W (also supports 13" x 19.2") B5 – SRA3 (also supports 13" x 19.2")	

Copier

Original paper size (Max)	A3	
First copy time *2 (seconds)	Colour	B/W
MX-7500N	5.1	3.7
MX-6500N	5.6	4.0
Continuous copies (Max)	9,999	
Resolution (dpi)	600 x 600, 9600 (equivalent) x 600	
Print (Colour)	1200 x 1200, 600 x 600, 9600 (equivalent) x 600	
Print (B/W)		
Gradation levels	256	
Zoom range (%)	25 – 400 (25 – 200 using DSPF) in 1% increments	
Preset copy ratios	10 (5R/5E)	

Network Printer

Resolution (dpi)	600 x 600, 1200 x 1200, 9,600 (equivalent) x 600	
Interface	USB2.0, 10Base-T / 100Base-TX / 1000Base-T	
Supported OS	Windows® XP, Windows Server® 2003/2008/2008R2/2012, Windows Vista®, Windows® 7, Windows® 8 Mac OS X 10.4, 10.5, 10.6, 10.7, 10.8, 10.9	
Network protocols	TCP/IP (IPv4 & IPv6), IPX/SPX (Netware), EtherTalk (AppleTalk)	
Printing protocols	LPR, Raw TCP (port 9100), POP3 (e-mail printing), HTTP, Novell Printserver application with NDS and Bindery, FTP for downloading print files, EtherTalk printing, IPP	
PDL	Std Opt	PCL6, Genuine Adobe® PostScript® 3™ XPS*3
Available fonts	PCL Genuine Adobe® PostScript® 3™	80 136

Paper input capacity (Min – Max) A4 A3 SRA3	3,100 – 13,500 1,000 – 11,500 100 – 10,500
Paper output capacity (Min – Max) A4 / A3 / SRA3	250 – 10,500
Warm-up time *1 (seconds)	90
Duplex	Std
Memory Copier/Printer (shared) HDD	5 GB 1 TB
Power requirements	220 to 240V/8A, 50/60Hz (10A plug x 2)
Power consumption (kW) (Max)	3.84
Dimensions (mm) (W x D x H)	982 x 768 x 1,530
Weight (kg)	228.1

EFI Fiery Controller (optional MX-PE10)

Resolution (dpi)	1200 x 1200, 600 x 600 (PS)
Interface	Gigabit Ethernet On Board
Supported OS	Windows XP (32/64bit), Vista (32/64bit), 7, 8, Server2003 (R2:32bit, SP1:64bit), Server 2008 (32bit, R2:64bit) MA C OS10.5 (PowerPC, Intel), 10.6(Intel), 10.7(Intel), 10.8 (Intel)
Network protocols	TCP/IP, IPX iPrint, LDAP
Printing protocols	LPD (TCP/IP network, LPR protocol) PServer (Netware networks, Bindery and NDS mode, NDP5 support) RPRINT(not supported, Netware networks) PAP: (AppleTalk network) SMB: (Windows network over TCP/IP), Port9100 IPP1.1 Email Print (PS,PDF) Mac Bonjour, Apple Talk
PDL	Genuine Adobe® PostScript® 3™
Available fonts	136 Roman (PS3)

Colour Network Scanner

Scan method	Push scan (via operation panel) Pull scan (TWAIN-compliant application)
Resolution (dpi)	Push scan Pull scan
	100, 150, 200, 300, 400, 600 75, 100, 150, 200, 300, 400, 600 50 - 9,600 via user setting
File formats	XPS*4, PDF, Encrypted PDF, Compact PDF*5, PDF/A-1b, JPEG (colour only), TIFF
Scan destinations	Scan to e-mail, FTP server, network folder (SMB), USB memory
Scanner utilities	Sharpdesk, Sharpdesk Mobile

Document Filing

Document filing capacity (pages/or files)	
Main folder & Custom Folder	35,000*6 or 5,000
Quick file folder	10,000*6 or 1,000
Stored jobs	Copy, print, scan
Storage folders	Quick folder, main folder, custom folder (max.1,000)
Confidential storage	Password protection

This is Why

www.sharp.co.uk

SHARP

Notes

*1 At rated voltage. May vary depending on machine conditions and operating environment. *2 Best achieved time based on A4 copy, long-edge feeding from 1st paper drawer, using document glass, when machine is ready. May vary depending on machine conditions and operating environment. *3 Requires optional MX-PUX1. *4 To view XPS files on PCs not running Windows Vista, you must have the XPS View application installed. *5 Requires optional MX-EB11. *6 Measured using Sharps' standard chart (A4 with 6% coverage, B/W). Storage capacity will vary depending on the type of document and the scan settings.

Design and specifications are subject to change without prior notice. All information was correct at time of print. The ENERGY STAR logo is a certification mark and may only be used to certify specific products that have been determined to meet the ENERGY STAR programme requirements. ENERGY STAR is a US registered mark. Windows, Windows XP, Windows Server and Windows Vista are registered trademarks of Microsoft Corporation. Adobe and PostScript 3 are either registered trademarks or trademarks of Adobe Systems Incorporated in the U.S. and/or other countries. All other company names, product names, and logos are trademarks or registered trademarks of their respective owners. ©Sharp Corporation October 2013 Ref: Datasheet MX-7500N/MX-6500N. All trademarks acknowledged. E&OE.

SHARP ELECTRONICS (UK) LTD
4 FURZEGROUND WAY
STOCKLEY PARK
UXBRIDGE
MIDDLESEX UB11 1EZ
TEL: 0800 138 5051
ROI: (+353) (0)20 8734 2000

