

**SHARP**<sup>®</sup>

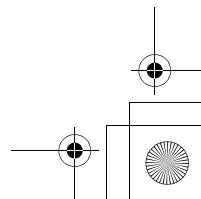
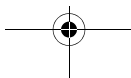
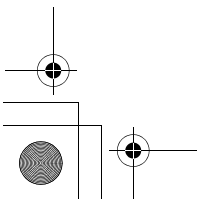
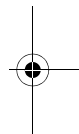
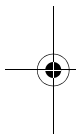
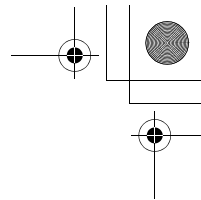
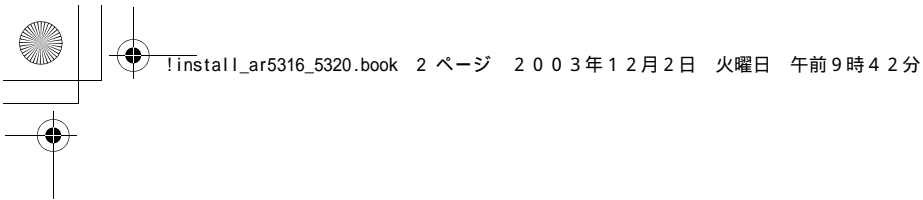
MODEL

**AR-5316**  
**AR-5320**  
**AR-5316 X**  
**AR-5320 X**

**DIGITAL MULTIFUNCTIONAL  
SYSTEM**

**SOFTWARE SETUP GUIDE**

	Page
• INTRODUCTION .....	<b>2</b>
• BEFORE INSTALLATION .....	<b>3</b>
• INSTALLING THE PRINTER DRIVER .....	<b>4</b>
• CONNECTING TO A COMPUTER .....	<b>8</b>
• CONFIGURING THE PRINTER DRIVER .....	<b>9</b>
• HOW TO USE THE ONLINE MANUAL .....	<b>10</b>
• TROUBLESHOOTING .....	<b>11</b>



---

---

# CONTENTS

**INTRODUCTION..... 2**

**BEFORE INSTALLATION ..... 3**

    ● HARDWARE AND SOFTWARE REQUIREMENTS ..... 3

    ● INSTALLATION ENVIRONMENT AND INSTALLATION PROCEDURE..... 3

**INSTALLING THE PRINTER DRIVER ..... 4**

    ● INSTALLATION IN WINDOWS XP (USB/PARALLEL CABLE) ..... 4

    ● INSTALLATION IN WINDOWS 98/Me/2000 (USB CABLE) ..... 5

    ● INSTALLATION IN WINDOWS 95/98/Me/NT 4.0/2000 (PARALLEL CABLE) ..... 6

**CONNECTING TO A COMPUTER ..... 8**

    ● CONNECTING A USB CABLE ..... 8

    ● CONNECTING A PARALLEL CABLE ..... 8

**CONFIGURING THE PRINTER DRIVER ..... 9**

**HOW TO USE THE ONLINE MANUAL ..... 10**

**TROUBLESHOOTING ..... 11**



# INTRODUCTION

This manual explains how to install and configure the software that is required for the printer functions of the machine. The procedure for viewing the Online Manual is also explained.



- The screen images in this manual are mainly for Windows XP. With other versions of Windows, some screen images may be different from those in this manual.
- The explanations in this manual are based on the North American version of the software. Versions for other countries and regions may vary slightly from the North American version.
- Where "AR-XXXX" appears in this manual, please substitute the name of your model for "XXXX". For the name of your model, see "DIFFERENCES BETWEEN MODELS" in the Operation Manual.
- This manual refers to the "SHARP Digital Multifunctional System AR-5316/5320 Software CD-ROM" simply as "CD-ROM".

## Trademark acknowledgments

- Microsoft® Windows® operating system is a trademark or copyright of Microsoft Corporation in the U.S.A. and other countries.
- Windows® 95, Windows® 98, Windows® Me, Windows NT® 4.0, Windows® 2000, and Windows® XP are trademarks or copyrights of Microsoft Corporation in the U.S.A. and other countries.
- Acrobat® Reader Copyright© 1987- 2002 Adobe Systems Incorporated. All rights reserved. Adobe, the Adobe logo, Acrobat, and the Acrobat logo are trademarks of Adobe Systems Incorporated.
- IBM and PC/AT are trademarks of International Business Machines Corporation.
- All other trademarks and copyrights are the property of their respective owners.

The display screens, messages, and key names shown in the manual may differ from those on the actual machine due to product improvements and modifications.

# BEFORE INSTALLATION

## HARDWARE AND SOFTWARE REQUIREMENTS

Check the following hardware and software requirements before installing the software.

Computer type	IBM PC/AT or compatible computer equipped with a USB 1.1* <sup>1</sup> or bi-directional parallel interface (IEEE 1284)
Operating system* <sup>2</sup>	Windows 95, Windows 98, Windows Me, Windows NT Workstation 4.0 (Service Pack 5 or later)* <sup>3</sup> , Windows 2000 Professional* <sup>3</sup> , Windows XP Professional* <sup>3</sup> , Windows XP Home Edition* <sup>3</sup>
Other hardware requirements	An environment on which any of the operating systems listed above can fully operate

\*<sup>1</sup> Compatible with Windows 98, Windows Me, Windows 2000 Professional, Windows XP Professional or Windows XP Home Edition preinstalled models equipped with a USB interface as standard.

\*<sup>2</sup> Printing is not available in MS-DOS mode.

\*<sup>3</sup> Administrator's rights are required to install the software using the installer.

## INSTALLATION ENVIRONMENT AND INSTALLATION PROCEDURE

Follow the appropriate installation procedure for your operating system and type of cable as indicated below.

Operating system	Cable	Procedure to follow
Windows XP	USB/Parallel	INSTALLATION IN WINDOWS XP (USB/PARALLEL CABLE) (p. 4)
Windows 98/Me/2000	USB	INSTALLATION IN WINDOWS 98/Me/2000 (USB CABLE) (p. 5)
Windows 95/98/Me/ NT 4.0/2000	Parallel	INSTALLATION IN WINDOWS 95/98/Me/NT 4.0/2000 (PARALLEL CABLE) (p. 6)

# INSTALLING THE PRINTER DRIVER



- In the following explanations it is assumed that the mouse is configured for right hand operation.
- If an error message appears, follow the instructions on the screen to solve the problem. After the problem is solved, the installation procedure will continue. Depending on the problem, you may have to click the "Cancel" button to exit the installer. In this case, reinstall the software from the beginning after solving the problem.

## INSTALLATION IN WINDOWS XP (USB/PARALLEL CABLE)



- 1 The USB or parallel cable must not be connected to the machine. Make sure that the cable is not connected before proceeding.**

If the cable is connected, a Plug and Play window will appear. If this happens, click the "Cancel" button to close the window and disconnect the cable.



The cable will be connected in step 9.

- 2 Insert the CD-ROM into your CD-ROM drive.**

- 3 Click the "start" button, click "My Computer" (  ), and then double-click the CD-ROM icon (  ).**

- 4 Double-click the "setup" icon (  ).**



If the language selection screen appears after you double click the "setup" icon, select the language you wish to use and click the "Next" button. (Normally the correct language is selected automatically.)

- 5 Read the message in the "Welcome" window and then click the "Next" button.**

- 6 When you are asked how the printer is connected, select "Connected to this computer" and click the "Next" button.**



- 7 Follow the on-screen instructions.**



If the following screen appears while the files are being copied (the message may appear more than once), click the "Continue Anyway" button.



- 8 When the finish screen appears, click the "OK" button.**



After the installation, a message prompting you to restart your computer may appear. In this case, click the "Yes" button to restart your computer.

- 9 Connect the interface cable to the machine and your computer (p. 8).**

- If you are using a USB cable, make sure the machine's power is turned on and then connect the cable.
- If you are using a parallel cable, turn off the power of the machine and your computer, connect the cable, turn on the power of the machine, and then turn on your computer.

Windows will detect the machine and the Plug and Play screen will appear.

- 10 Begin installation of the printer driver.**

"SHARP AR-XXXX" will appear in the "Found New Hardware Wizard" dialog box. Select "Install the software automatically (Recommended)" and click the "Next" button. Follow the on-screen instructions.



If a warning window appears regarding the "Windows logo test", be sure to click the "Continue Anyway" button.

**This completes the installation of the software.**

Configure the printer driver settings as explained in "CONFIGURING THE PRINTER DRIVER" (p. 9).

## INSTALLING THE PRINTER DRIVER

## INSTALLATION IN WINDOWS 98/Me/2000 (USB CABLE)

- 1** The USB cable must not be connected to the machine. Make sure that the cable is not connected before proceeding.

If the cable is connected, a Plug and Play window will appear. If this happens, click the "Cancel" button to close the window and disconnect the cable.

**Note** The cable will be connected in step 10.

- 2** Insert the CD-ROM into your CD-ROM drive.

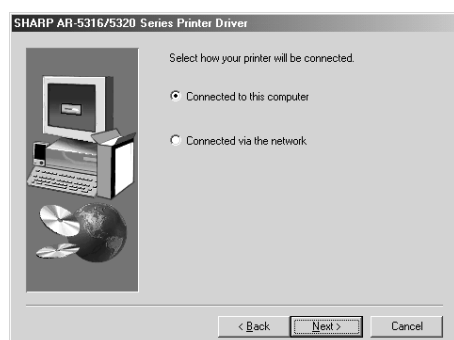
- 3** Double-click "My Computer" (  ), and then double-click the CD-ROM icon (  ).

- 4** Double-click the "setup" icon (  ).

**Note** If the language selection screen appears after you double click the "setup" icon, select the language you wish to use and click the "Next" button. (Normally the correct language is selected automatically.)

- 5** Read the message in the "Welcome" window and then click the "Next" button.

- 6** When you are asked how the printer is connected, select "Connected to this computer" and click the "Next" button.

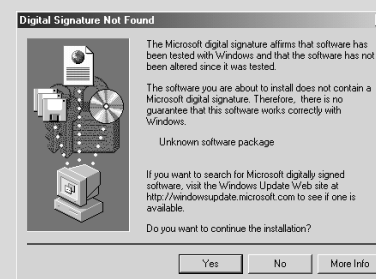


- 7** When the interface selection screen appears, select "USB" and click the "Next" button.



- 8** Follow the on-screen instructions.

**Caution** In Windows 2000, if the following screen appears while the files are being copied (the message may appear more than once), click the "Yes" button.



- 9** When the finish screen appears, click the "OK" button.

**Note** After the installation, a message prompting you to restart your computer may appear. In this case, click the "Yes" button to restart your computer.

- 10** Make sure that the power of the machine is turned on, and then connect the USB cable. (p. 8)

Windows will detect the machine and the Plug and Play screen will appear.

- 11** Follow the instructions in the Plug and Play screen that appears in your version of Windows to begin the installation.

This completes the installation of the software. Configure the printer driver settings as explained in "CONFIGURING THE PRINTER DRIVER" (p. 9).

## INSTALLING THE PRINTER DRIVER

INSTALLATION IN WINDOWS 95/98/Me/NT 4.0/2000  
(PARALLEL CABLE)

- 1** The USB or parallel cable must not be connected to the machine. Make sure that the cable is not connected before proceeding.

If the cable is connected, a Plug and Play window will appear. If this happens, click the "Cancel" button to close the window and disconnect the cable.

**Note** The cable will be connected in step 12.

- 2** Insert the CD-ROM into your CD-ROM drive.

- 3** Double-click "My Computer" ( ), and then double-click the CD-ROM icon ( ).

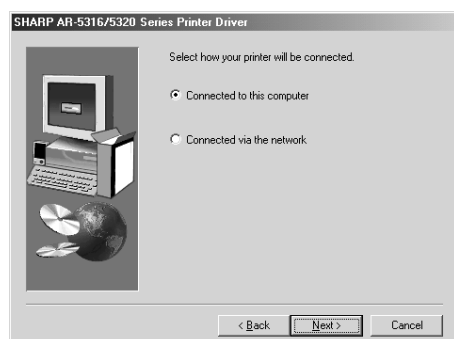
- 4** Double-click the "setup" icon ( ).

**Note** If the language selection screen appears after you double click the "setup" icon, select the language you wish to use and click the "Next" button. (Normally the correct language is selected automatically.)

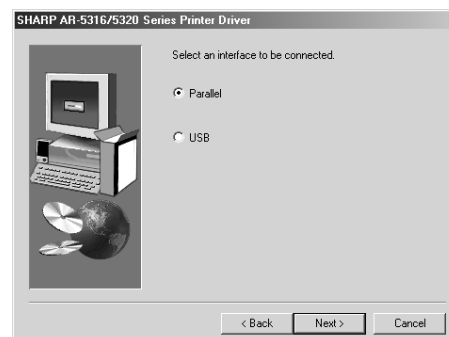
- 5** Read the message in the "Welcome" window and then click the "Next" button.

If you are using Windows 95/NT 4.0, go to step 8.

- 6** When you are asked how the printer is connected, select "Connected to this computer" and click the "Next" button.

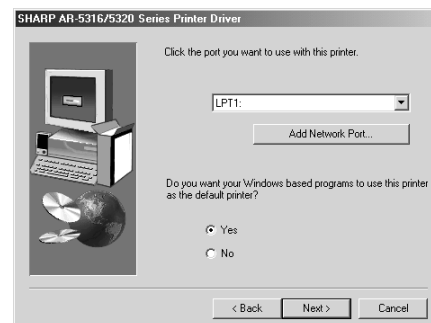


- 7** When the interface selection screen appears, select "Parallel" and click the "Next" button.



- 8** Select the printer port and click the "Next" button.

Select "LPT1" for the printer port.

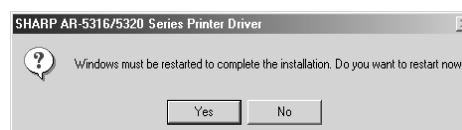


**Note** If "LPT1" does not appear, another printer or peripheral device is using LPT1. In this case continue the installation, and after the installation is finished, change the port setting so that the machine can use LPT1. This procedure is explained in "Another printer is using the parallel port (when using a parallel cable)" on page 12.

- 9** When the model selection window appears, select model name of your machine and click the "Next" button.

For the name of the model that you are using, see "DIFFERENCES BETWEEN MODELS" in the Operation Manual.

- 10** Click the "Yes" button.





## INSTALLING THE PRINTER DRIVER

**11** When the finish screen appears, click the "OK" button.



**Note**

After the installation, a message prompting you to restart your computer may appear. In this case, click the "Yes" button to restart your computer.

**12** Turn off the power of the machine and your computer, and connect the machine to your computer with the parallel cable. (p. 8)

After connecting the machine to your computer, turn on the power of the machine and then start up your computer.

**This completes the installation of the software.**

Configure the printer driver settings as explained in "CONFIGURING THE PRINTER DRIVER" (p. 9).

# CONNECTING TO A COMPUTER

Follow the procedure below to connect the machine to your computer.

Interface cables for connecting the machine to your computer are not included with the machine. Please purchase the appropriate cable for your computer.

## Interface cable

### USB cable

Shielded twisted pair cable, high-speed transmission equivalent (3 m (10 feet) max.)

### Parallel cable

IEEE 1284-Shielded type bi-directional parallel interface cable (3 m (10 feet) max.)

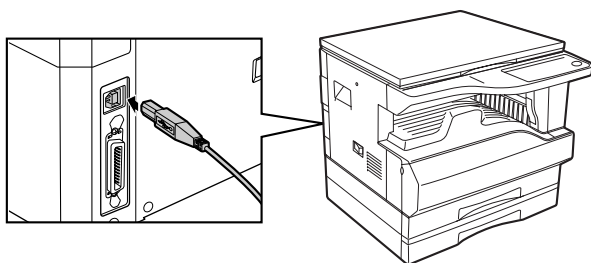


- USB is available with a PC/AT compatible computer that was originally equipped with USB and had Windows 98, Windows Me, Windows 2000 Professional, Windows XP Professional or Windows XP Home Edition preinstalled.
- Do not connect the interface cable before installing the printer driver. The interface cable should be connected during installation of the printer driver.

## CONNECTING A USB CABLE

- 1** Insert the cable into the USB connector on the machine.

- 2** Insert the other end of the cable into the your computer's USB connector.

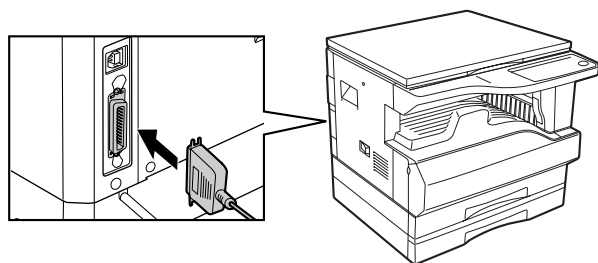


## CONNECTING A PARALLEL CABLE

- 1** Ensure that your computer and the machine are turned off.

- 3** Plug the other end of the cable into your computer's parallel connector.

- 2** Plug the cable into the parallel connector on the machine, and fasten with the clasps.



# CONFIGURING THE PRINTER DRIVER

After installing the printer driver, you must configure the printer driver settings appropriately for the number of paper trays on the machine and the size of paper loaded in each.

- 1 Click the "start" button, click "Control Panel", click "Printers and Other Hardware", and then click "Printers and Faxes".**

In operating systems other than Windows XP, click the "Start" button, select "Settings", and then click "Printers".

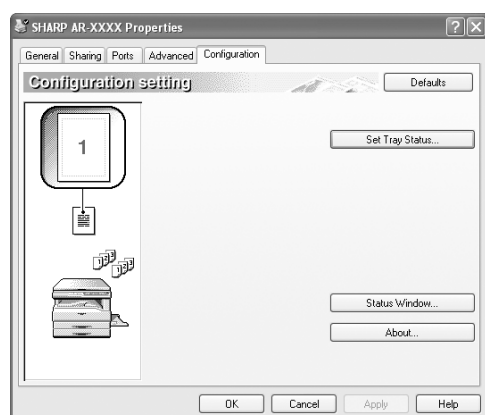
- 2 Click the "SHARP AR-XXXX" printer driver icon and select "Properties" from the "File" menu.**

If you are using Windows NT 4.0/2000/XP, go to step 4.

- 3 In Windows 95/98/Me, click the "Setup" tab.**

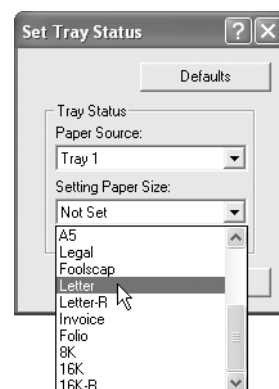
- 4 Click the "Configuration" tab.**

Set the printer configuration properly. If not, printing may not take place correctly.



- 5 Click the "Set Tray Status" button and select the size of paper that is loaded in each tray.**

Select a tray in the "Paper source" menu, and select the size of paper loaded in that tray from the "Setting Paper Size" menu. Repeat for each tray.



## Caution

Be sure to configure the above "Set Tray Status" settings, and then when printing specify a tray other than "Auto Select" in "Paper Source" in the "Paper" tab of the printer driver setup screen.

- 6 Click the "OK" button in the "Set Tray Status" window.**

- 7 Click the "OK" button in the printer properties window.**

# HOW TO USE THE ONLINE MANUAL

The Online Manual provides detailed instructions for operating the machine as a printer. View the Online Manual when you use the printer functions after the initial setup is completed.



To view the Online Manual, your computer must have Acrobat Reader 5.0 or later. If you do not have Acrobat Reader, follow the instructions in "Installing Acrobat Reader" to install it.

**1** Insert the CD-ROM into your CD-ROM drive.

**2** Click the "start" button, click "My Computer" (  ), and then double-click the CD-ROM icon (  ).

In Windows 95/98/Me/NT 4.0/2000, double-click "My Computer", and then double-click the CD-ROM icon.

**3** Double-click the "Manual" folder, double-click the "English" folder, and then double-click the "AR\_5316\_5320.pdf" icon.

The Online Manual will appear.



- If you will be viewing the Online Manual repeatedly, you may find it convenient to copy this Online Manual file to your computer.
- The Online Manual can be printed out using Acrobat Reader. SHARP recommends printing out the sections which you refer to regularly.
- Refer to "Help" of Acrobat Reader for more details on how to use Acrobat Reader.

## Installing Acrobat Reader

**1** Insert the CD-ROM into the CD-ROM drive.

**2** Click the "start" button, click "My Computer" (  ), and then double-click the CD-ROM icon (  ).

In Windows95/98/Me/NT4.0/2000, double-click "My Computer", and then double-click the CD-ROM icon.

**3** Double-click the "Acrobat" folder, and then double-click the "ar500enu.exe" icon.

Follow the on-screen instructions to install Acrobat Reader.

# TROUBLESHOOTING

If the software does not install correctly, check the following items on your computer.  
To remove the software, see "Removing the software" in the Operation Manual.

## Printer driver cannot be installed (Windows 2000/XP)

If the printer driver cannot be installed in Windows 2000/XP, follow these steps to check your computer's settings.

### 1 Click the "start" button and then click "Control Panel".

In Windows 2000, click the "Start" button, select "Settings", and then click "Control Panel".

### 2 Click "Performance and Maintenance", and then click "System".

In Windows 2000, double-click the "System" icon.

### 3 Click the "Hardware" tab and then click the "Driver Signing" button.

### 4 Check "What action do you want Windows to take?" ("File signature verification" in Windows 2000).



If the option "Block" has been selected, it will not be possible to install the printer driver. Select the option "Warn" and then install the printer driver as explained in "INSTALLING THE PRINTER DRIVER".

## Plug and play screen does not appear (when using a USB cable)

If the Plug and Play screen does not appear after you connect the machine to your computer with a USB cable and turn on the machine, follow the steps below to verify that the USB port is available.

### 1 Click the "start" button, click "Control Panel", and then click "Performance and Maintenance".

In Windows 98/Me/2000, click the "Start" button, select "Settings", and then click "Control Panel".

### 2 Click "System", click the "Hardware" tab, and click the "Device Manager" button.

"Universal Serial Bus controllers" will appear in the list of devices.



**Note**

- In Windows 98/Me, double-click the "System" icon and click the "Device Manager" tab.
- In Windows 2000, double-click the "System" icon, click the "Hardware" tab, and click the "Device Manager" button.
- If the "System" icon does not appear in Windows Me, click "view all Control Panel options".

### 3 Click the icon beside "Universal Serial Bus controllers".



Two items should appear: your controller chipset type and Root Hub. If these items appear, you can use the USB port. If the "Universal Serial Bus controllers" shows a yellow exclamation point or does not appear, you must check your computer manual for USB troubleshooting or contact your computer manufacturer.

### 4 Once you have verified that the USB port is enabled, install the software as explained in "INSTALLING THE PRINTER DRIVER".

## TROUBLESHOOTING

### The Printer driver cannot be correctly installed by Plug and Play (Windows 2000/XP)

In Windows 2000/XP, if the printer driver cannot be correctly installed by Plug and Play (for example, Plug and Play takes place without copying the required files for the printer driver installation), follow these steps to remove unneeded devices and then install the printer driver as explained in "INSTALLING THE PRINTER DRIVER" (p. 4).

- 1 Click the "start" button, click "Control Panel", and then click "Performance and Maintenance".

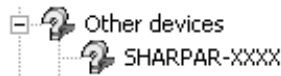
In Windows 2000, click the "Start" button, select "Settings", and then click "Control Panel".

- 2 Click "System", click the "Hardware" tab, and click the "Device Manager" button.



In Windows 2000, double-click the "System" icon, click the "Hardware" tab, and click the "Device Manager" button.

- 3 Click the icon beside "Other devices".



If "SHARP AR-XXXX" appears, select and delete both of these items.



If "Other devices" does not appear, close the "Device Manager" window.

- 4 Install the software as explained in "INSTALLING THE PRINTER DRIVER".

### Another printer is using the parallel port (when using a parallel cable)

If another printer is using the parallel port and printing is not possible using the machine, follow the steps below to change the port setting of the other printer driver, and make sure that the port of the printer driver for the machine is set to LPT1.

- 1 Click the "start" button, click "Control Panel", click "Printers and Other Hardware", and then click "Printers and Faxes".

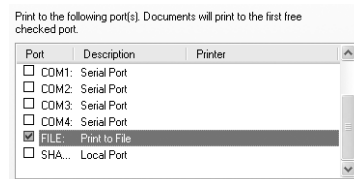
In Windows 95/98/Me/NT 4.0/2000, click the "Start" button, select "Settings", and then click "Control Panel".

- 2 Click the icon of the printer driver for which you wish to change the port setting, and select "Properties" from the "File" menu.

- 3 Click the "Ports" tab.

In Windows 95/98/Me, click the "Details" tab.

- 4 Select "FILE:" in the "Print to the following port" list box, and click the "OK" button.

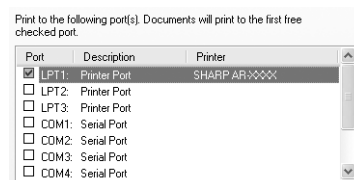


- 5 Click the "SHARP AR-XXXX" printer driver icon and select "Properties" from the "File" menu.

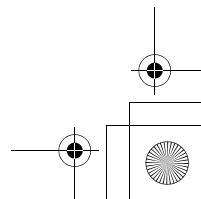
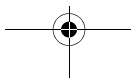
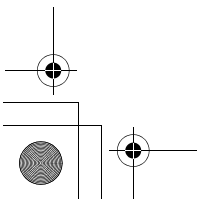
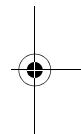
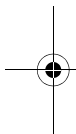
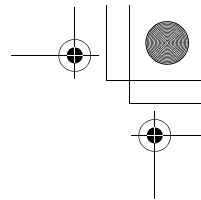
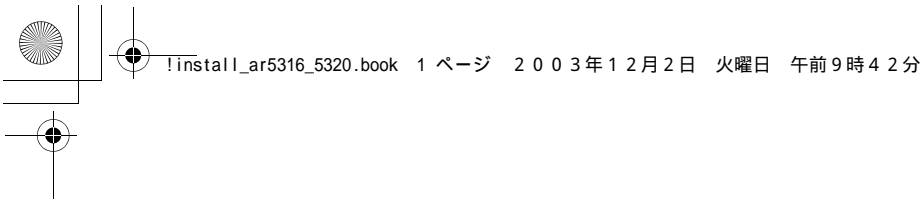
- 6 Click the "Ports" tab.

In Windows 95/98/Me, click the "Details" tab.

- 7 Select "LPT1" in the "Print to the following port" list box, and click the "OK" button.



In the event that you need to use the other printer, repeat the above steps to set the port of the machine to "FILE:", and change the port setting of the other printer back to "LPT1".



# AR-5316/AR-5320/AR-5316 X/AR-5320 X

**SHARP®**  
SHARP CORPORATION

Printed on 100% post-consumer recycled paper

PRINTED IN CHINA  
2003M KS①  
TINSE1209QSZZ